

NCAComp 2021 Trends

The team at NCAComp has prepared an analysis of annual accrued data to present these conclusions:

59%

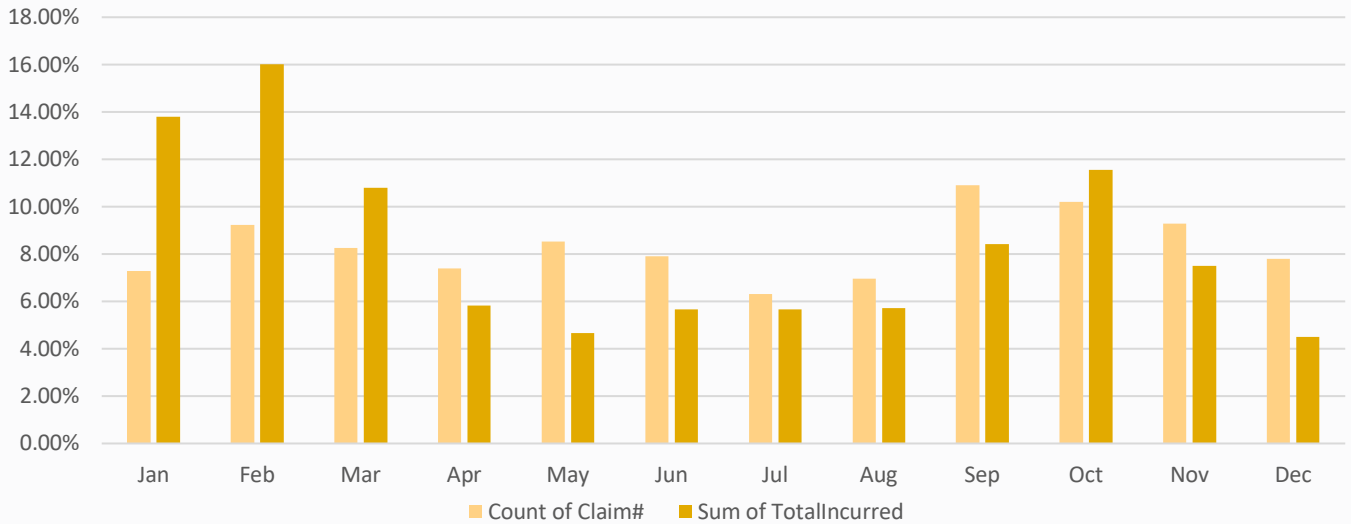
The percentage of claims that have at least one other claim.

REPRESENTS

65%

The 59% of repeat claims represents 65% of ALL associated costs

CLAIMS BY MONTH



2021 CLAIMS BY INJURY TYPE

Claim Type	% of Total Incurred	% of Claims
Strain or Tear – From Muscle Trauma	31.57%	21.58%
Sprain or Tear - Joint Tear	14.28%	9.38%
Contusion	12.01%	24.06%
Fracture	10.57%	4.47%
All Other Specific Injury	6.38%	6.09%
Death	5.89%	0.67%
Laceration / Scratches / Abrasion	3.64%	13.34%
Inflammation	2.96%	3.74%
COVID-19	2.18%	0.57%
Multiple Physical Injuries Only	1.68%	2.25%

MOST FREQUENT CAUSE OF CLAIMS

Cause of Claim	% Total Incurred	% of Total Claims
Fellow Worker, Patient or Other Person	7.10%	18.38%
Bites/Stings	0.66%	17.29%
Trip, Slip, Fall -On the Same Level	12.97%	8.27%
Lifting	10.78%	5.33%
Strain or Injury by, NOC	3.73%	4.12%
Trip, Slip, Fall -On Ice or Snow	6.37%	2.81%
Cut, Puncture, Scrape, NOC	0.40%	2.67%
Trip, Slip, Fall -On Stairs	3.79%	2.58%
Trip, Slip or Fall, NOC	4.66%	2.55%
Struck or Injured, NOC	1.34%	2.40%

COVID Claims: 18 COVID Claims | Avg. Cost \$27,079 | \$1,899.21 avg. cost when the one outlier is removed
Outlier estimated cost is \$455,136 | 14 claims are controverted (78%)

Trip, Slip & Fall: When combined is still the largest claim cause representing 19.1% of claims and 33.5% of claims cost